

Instructions and Set up for the CurtainMinder (CM 6000)

Default settings are Single PH, English, Basic Mode, and 5 Minute Delay

Mount CurtainMinder to desired position in workroom.

Place battery in lower left-hand corner of enclosure. (Do Not Connect)

Installation: **Connect** AC Power per wiring diagram, **Connect** Winch Kits and Reed Switches to unit using a minimum 18-gauge 2-conductor lampcord.

See (Figure 2) if desired voltage is 2PH or 3PH.

Magnets are wired in Parallel, and Reed Switches are wired in Series (Figure 1)

If AlarmMinder is used, confirm it is wired correctly (Figure 1)

If TempMinder is used as an emergency high heat thermostat, confirm it is wired correctly (Figure 1)

If power is out for more than 5 hours, the battery must be disconnected to avoid battery damage. Failure to disconnect will void warranty.

Modes and Strength

Reed Switch Mode: This mode drops the curtains in the event of low power or total power loss. If a winch is released by accident the others will release after Time Delay.

In addition, **Reed Switch Mode** alerts you to the following:

1. Winch Kits are closed at startup
2. A magnet goes bad and releases a winch
3. A winch accidentally opens
4. A wire is cut or breaks going to the Winch Kits

Basic Mode: This mode drops the curtains in the event of low power or total power loss.

Initial Set Up, System Set Up and if Reed Switches are not used (Not Recommended)

- Step #1 **Turn** on AC Power to CurtainMinder
Screen displays "English: + Español: - "
Press Delay+ for English **Press** Delay- for Spanish
Screen displays "CM6000 Start Up press ENTER"
- Step # 2 Screen displays "Mode: Basic + Voltage: 1PH -"
Leave in Basic Mode until system setup is complete.
If desired voltage is not 1PH **Press** Delay- to select 2PH or 3PH (Figure 2)
Press ENTER Screen displays "Settings Confirmed"
- Step #3 **(Observe polarity connect battery, Failure to follow steps may void warranty)**
Screen displays "Connect battery, then press ENTER"
Screen displays "Curtain Minder starting up..."
Screen displays "Basic Mode OK Delay: 5:00"
Set Desired Time Delay in the event of low power or loss of power for Winch Kits to release curtains.
Use Integrator recommendation for Time Delay. **Press** Delay+ and Delay- buttons until desired Time Delay.
- Step #4 **Test Battery (12V 5AH Sealed Lead Acid Battery)**
Press "Test Battery" Screen displays "Please wait Testing...0:15" Screen displays "Battery OK" or "Battery Bad!
Replace Battery"
- Step #5 **Close** all Winch Kits. **Do Not Connect winch handles to Winch Kits at this time.**
- Step #6 **Hold** "Reset Winches" until settings appear **Press** Delay+ to change to **Reed Switch Mode**
Press "ENTER" Screen displays "Mode & Lang Confirmed", Screen displays "Reed Switch OK Delay: 5:00"

If Screen displays **"Reed Switch OK Delay: 5:00"** System is operating, and Winch Kits are holding.
Proceed to Step #7

If Screen displays **"CHECK WINCHES TIMING 5:00"** System is operating incorrectly.
Hold "Reset Winches" until settings appear **Press** Delay+ to change back to **Basic Mode**
Press "ENTER" Screen displays "Basic Mode OK Delay: 5:00"

Make sure all Winch Kits are closed, confirm reed switches are wired in series, confirm magnets are wired in parallel. Redo Step #6 until displays shows **"Reed Switch OK Delay: 5:00"**. Proceed to Step #7

Step #7

Test Unit

1. Change the delay using + and - buttons to a minimal time (30 seconds)
2. **Disconnect** AC Power from the CurtainMinder
3. Screen displays "LOW POWER! TIMING! 0:30" and the delay time starts counting down. All Winch Kits should release after countdown and Screen displays "WINCHES RELEASED DUE TO LOW POWER"
4. **Reconnect** AC Power to CurtainMinder
5. **Press** "Reset Winches" display shows "Go reset winches Timing...10:00" you have 10 minutes to close all Winch Kits. When all Winch Kits are closed Screen displays "Winches reset successfully" Screen displays "Reed Switch OK Delay: 0:30"
6. To further test reed switches, open the hinge on a Winch Kit. Screen displays "CHECK WINCHES TIMING! 0:30" and timing starts. All other Winch Kits should release after timing ends and Screen displays "WINCHES RELEASED FROM REED SWITCHES."
Press "Reset Winches" display shows "Go reset winches Timing...10:00" you have 10 minutes to close all Winch Kits. When all Winch Kits are closed Screen displays "Winches reset successfully" Screen displays "Reed Switch OK Delay: 0:30"

Step #8

Hold "Reset Winches" until settings appear
Press Delay+ to change back to **Basic Mode**
Press "ENTER" Mode & Lang Confirmed
Screen displays **"Basic Mode OK Delay: 0:30"**

Now, connect Winch Handles to Winch Kits

Step #9

Hold "Reset Winches" until settings appear
Press Delay+ to change to **Reed Switch Mode**.
Press "ENTER" Screen displays "Mode & Lang Confirmed", Screen displays "Reed Switch OK Delay: 5:00"

CurtainMinder is now successfully Set up and operational!
Please Test the CurtainMinder Thoroughly and Frequently!

The CurtainMinder is only a Management Tool and NOT an Insurance Policy.
It does not replace the attendant or make a poor attendant a good one.

For MAXIMUM PROTECTION, make sure that:

- (A) The ratchet is disengaged.
- (B) The weight of the winch handle is sufficient to flip the hinge completely down.
- (C) The curtains will fall when the winch handles are released.

NOTES:

If unit is left in **Basic Mode** and the winches are not set, when “RESET WINCHES” is pressed, a 10-minute timer starts. After the 10 minutes, the system will start operation and will not recognize if the Winch Kits are closed or open. Therefore, **Basic Mode** is only used during Initial Set up.

During low power or loss of power, timing starts immediately. The CurtainMinder will wait 30 seconds to see if the power is restored before sending a signal to an alarm if one is connected.

If the winches are released for any reason, it is recommended to set the unit in **Basic Mode** for faster Set up while connecting the winch handles to the Winch Kits. If the system is left in **Reed Switch Mode** and “RESET WINCHES” is pushed a 10-minute timer starts. You have 10 minutes plus desired Time Delay to connect all Winch Kits if they are not connected during this time the CurtainMinder will release all Winch Kits.

If more magnet strength is needed, **Hold** ENTER Press Delay+ to choose High **Press** ENTER Screen displays “Settings Confirmed” Screen displays home screen.

Within 5 minutes of no screen activity the display goes blank, press any key to see display.

WARNINGS

TO REDUCE THE RISK OF FIRE OR ELECTRIC SHOCK, DO NOT EXPOSE THIS PRODUCT TO RAIN OR MOISTURE.

TO REDUCE THE RISK OF ELECTRIC SHOCK, DO NOT OPEN THIS COVER WITHOUT DISCONNECTING POWER.

WHEN THIS UNIT IS USED IN A LIFE SUPPORT VENTILATION SYSTEM WHERE FAILURE COULD RESULT IN LOSS OR INJURY, THE USER SHALL PROVIDE ADEQUATE BACK-UP CONTROL FACILITIES OR ACCEPT THE RISK OF SUCH LOSS OR INJURY.

THIS APPLIANCE IS OFFERED FOR SALE SPECIFICALLY ON THE BUYER’S ACCEPTANCE OF THE ABOVE CONDITIONS AND THE MANUFACTURER’S WARRANTY FOR THIS APPLIANCE.

ACCEPTANCE, RETENTION, INSTALLATION, OR THE OPERATION OF THIS APPLIANCE BY THE BUYER SHALL BE CONSIDERED AS ACKNOWLEDGEMENT AND ACCEPTANCE OF THE ABOVE CONDITIONS.

LIMITED WARRANTY

Pro-Tech18, Inc. warrants this product to be free from defects in material and workmanship for a period of twelve months from the date of purchase if is used for the purpose for which it is intended.

Pro-Tech 18, Inc. will repair or replace this product if it proves to be defective in material or workmanship.

Pro-Tech 18, Inc. will not cover incidental or consequential damages or damage due to misuse of the product.

This warranty gives you specific legal rights, and you may also have other rights which vary from state to state.

PRO-TECH 18 INC

1256 North Barkley Rd., Statesville, NC 28677

Tel: 704-872-6227 Fax: 980-223-2872

sales@pro-techinc.com

www.pro-techinc.com

Figure 1

CM 6010 CurtainMinder Installation

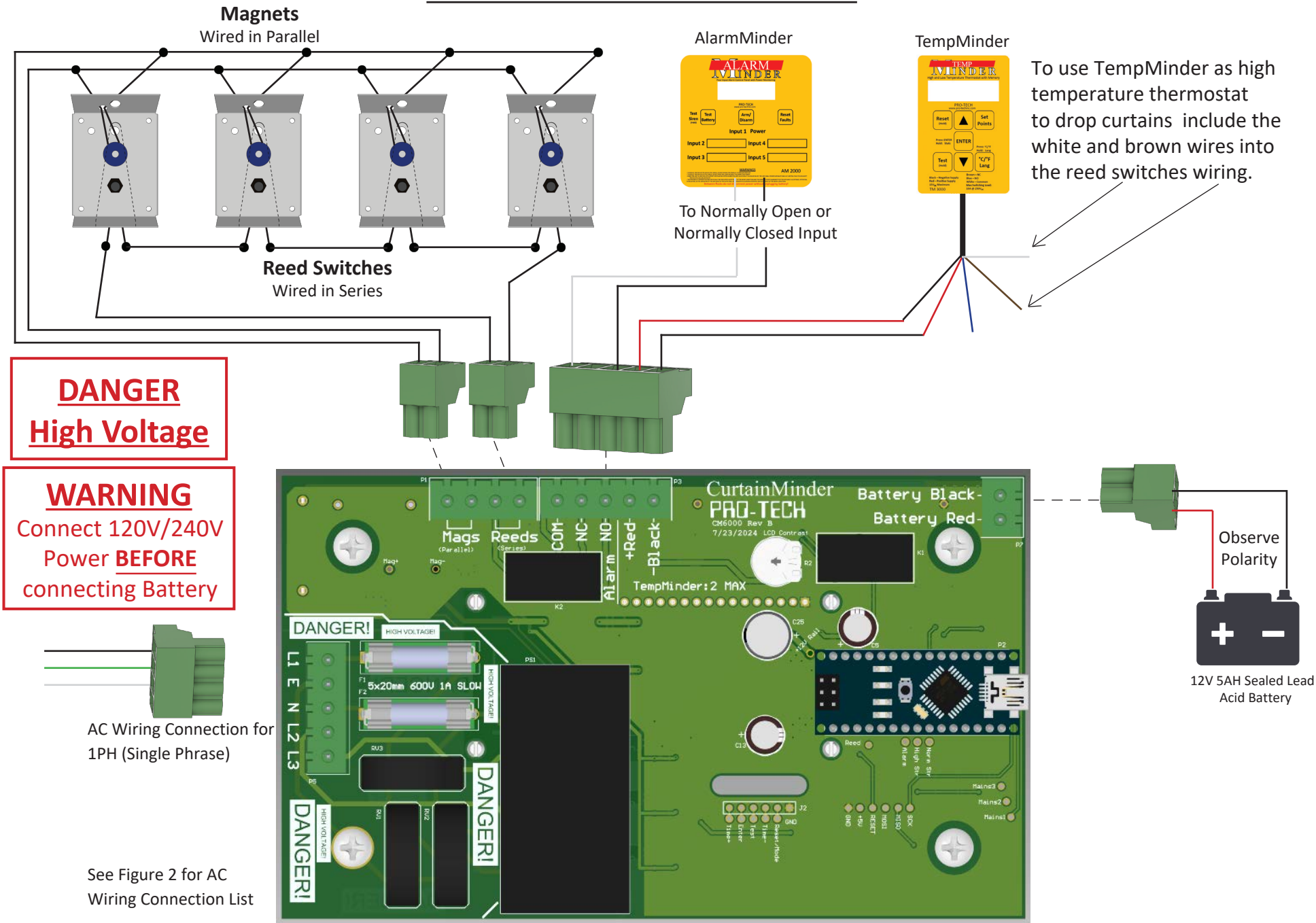


Figure 2

AC Wiring Connection

120V-277V 1PH (85V-305V range)	120V/240V or 230V/300V 2PH	120V/208V/480V 3PH WYE or HIGH LEG **	Up to 300V 3PH DELTA	above 300V 3PH DELTA
1PH	2PH	3PH	2PH	n/a
L1	L1	L1	L1	need Step-down Xfmr for each input.
EARTH	EARTH	EARTH	EARTH	
N	N	N	L3*	
-	L2	L2	L2	
-	-	L3	-	

***IMPORTANT: If 3PH DELTA (no Neutral), connect L3 to N and select 2PH in Voltage Select MENU.**

**** High Leg (4-Wire DELTA) - rare wiring configuration, but can be accommodated by the 3PH WYE selection.**